



PAPERPASTE MANNEQUINS

The green, unwashed.



PASQUAL ARNELLA
Barcelona · 1892



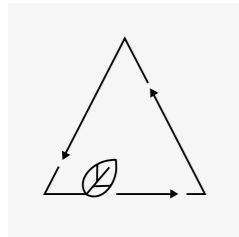
Pasqual Arnella is a family business with 130 years of experience crafting products with recycled paper.

Our mannequins are made of paperpaste, a renewable compound that embraces the circular economy from all sides.

We are a team empowered by four generations of people who believe in what we do and how we do it. Because it's all about passion.

#WeAre**PAPERPASTE**

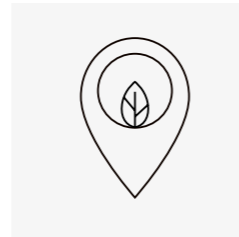
WE ARE...



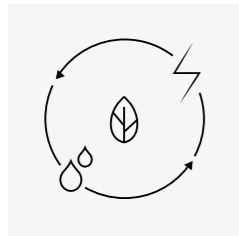
PAPERPASTE



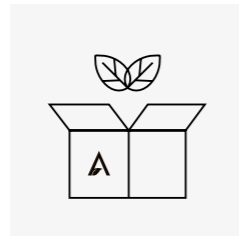
**WITH
Km0 SUPPLIERS**



**LOCAL
PRODUCTION**



GREEN ENERGY



**ECOFRIENDLY
PACKAGING**



**CRAFTED WITH
LOVE**

INDEX |

#WeAre**PAPERPASTE**

02

mannequins&femmequins

04

torsos

10

legs

22

hips&foot forms

25

heads

29

optionals&fittings

34

04

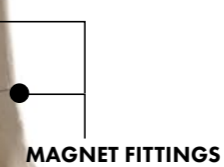
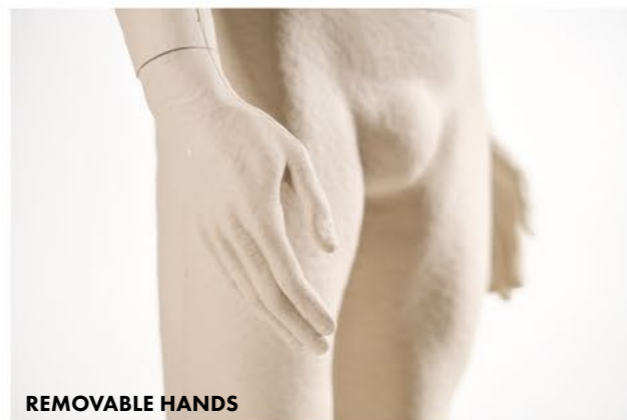
manneq
& femme luins



GENTO

REF. 2765
OPTIONAL
FINISHES

SIZE 48
Baseplate · Head · Hands · Hanging fittings · Hood support · Logotype · 3 in 1 system
Natural · Painted · Dyed (p. 36)



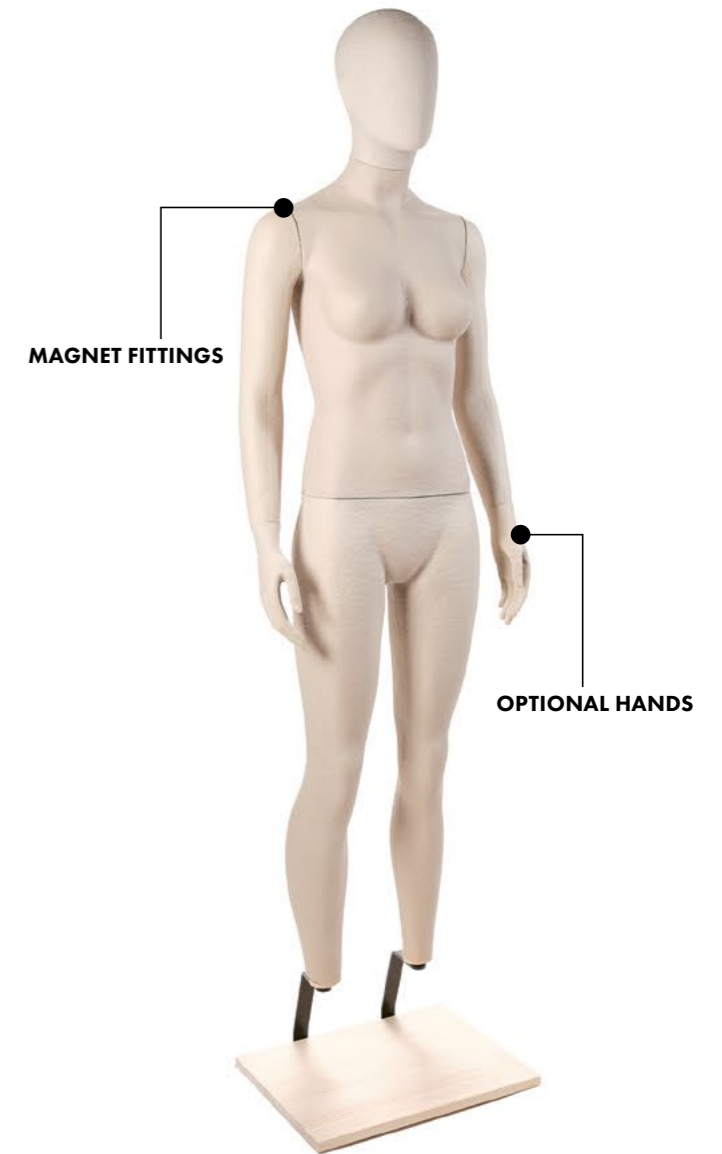
05



FACELESS HEAD (LEFT), SEMI-FACELESS HEAD (RIGHT)

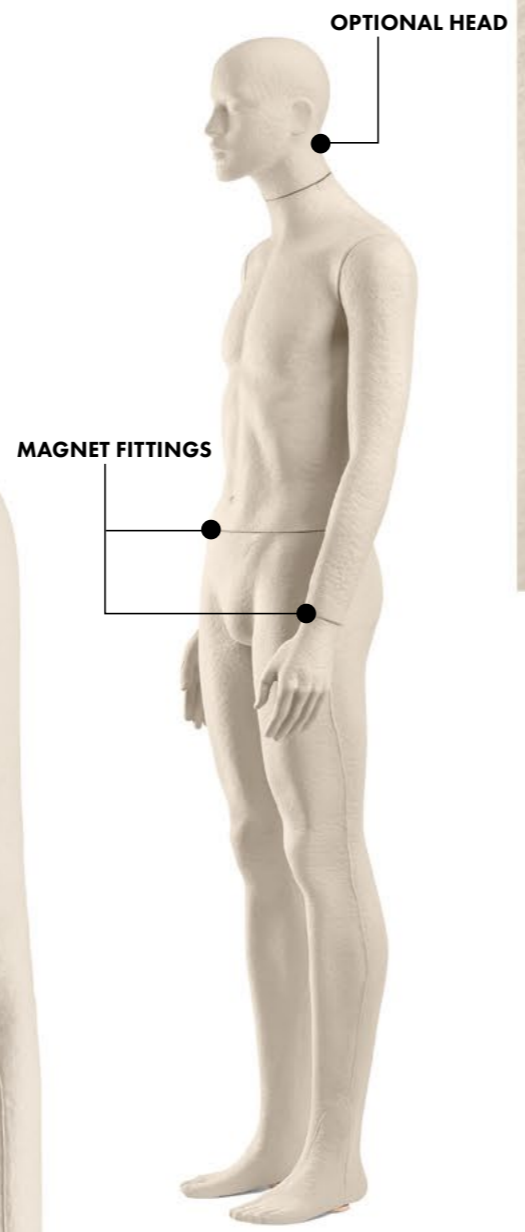


HEADLESS



MAGNET FITTINGS

OPTIONAL HANDS



07

HEKLA | ETNA

HEKLA REF. 2740FB SIZE 34
ETNA REF. 2701FB SIZE 34/36
OPTIONAL Baseplate · Head · Hands · Hanging fittings · Hood support · Logotype · 3 in 1 system
FINISHES Natural · Painted · Dyed (p. 36)

08



HEKLA

ETNA

MANNEQUINS & FEMMEQUINS

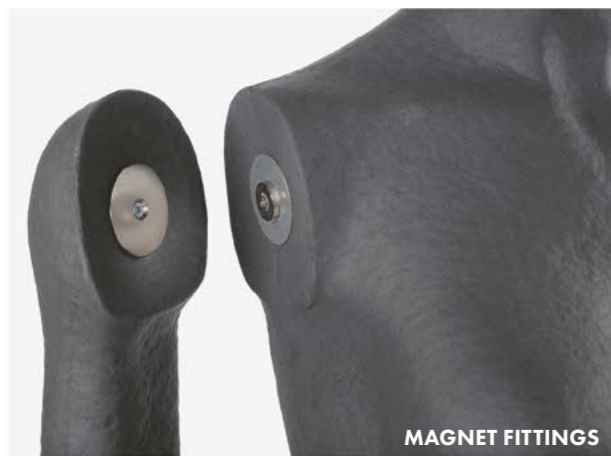




torsos

GENTO

REF. 2765A SIZE 48
OPTIONAL Baseplate · Head · Hands · Hanging fittings · Hood support · Logotype
FINISHES Natural · Painted · Dyed (p. 36)



GENTO

VALIRA

REF. 2766A **SIZE** 38
OPTIONAL FINISHES Baseplate · Head · Hands · Hanging fittings · Hood support · Logotype
Natural · Painted · Dyed (p. 36)

VALIRA

PASQUAL ARNELLA

12

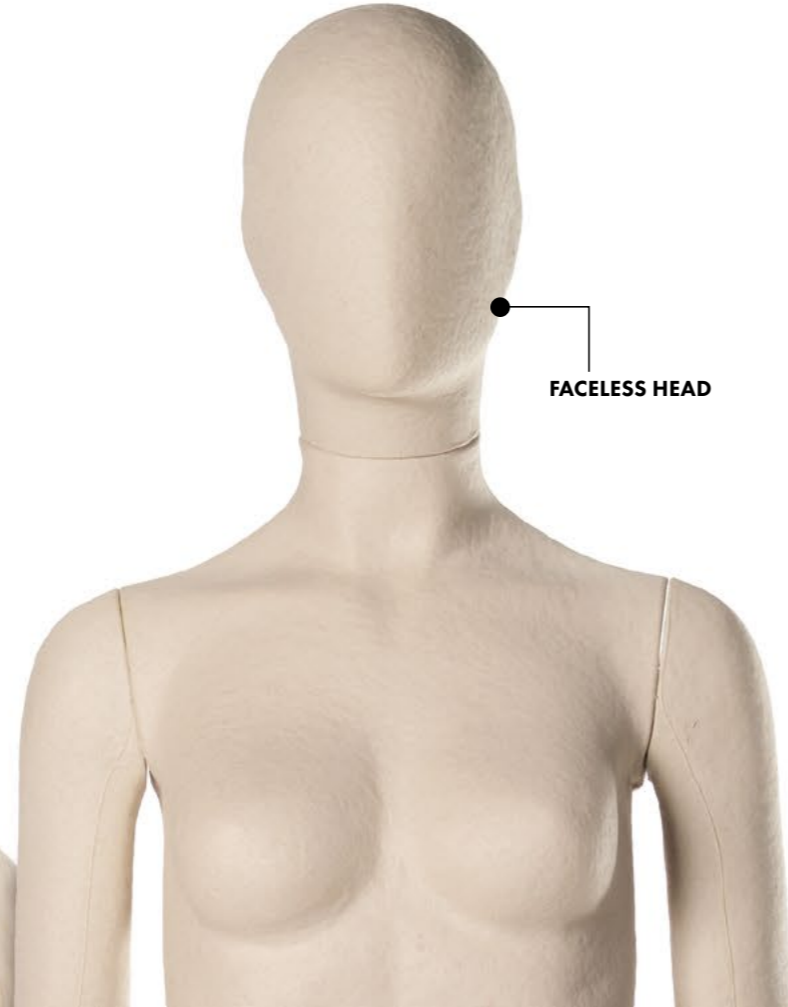
SEMI-FACELESS HEAD

FACELESS HEAD

HOOD SUPPORT

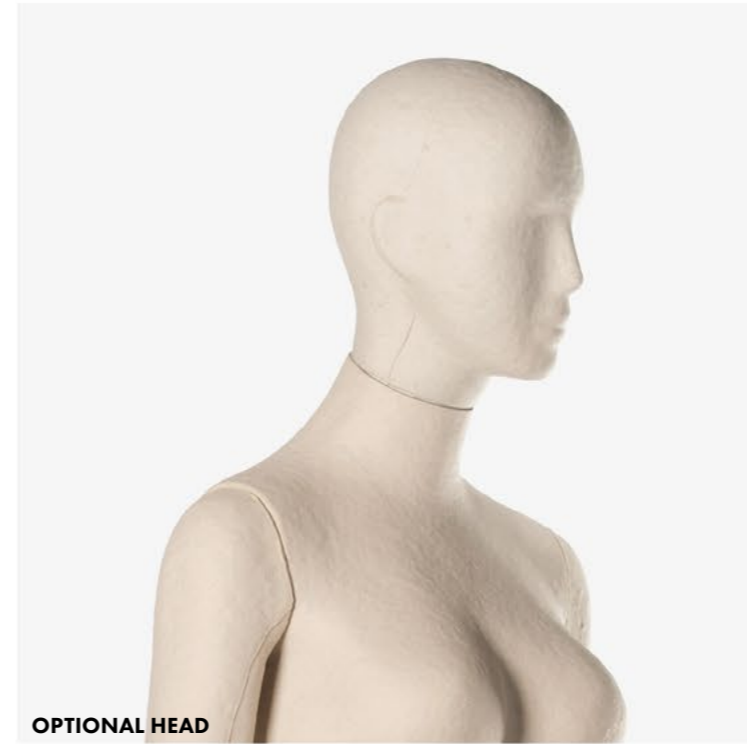
OPTIONAL HANDS

TORSOS





NATURAL COLOUR



OPTIONAL HEAD



MAGNET FITTINGS



ANTHRACITE DYED

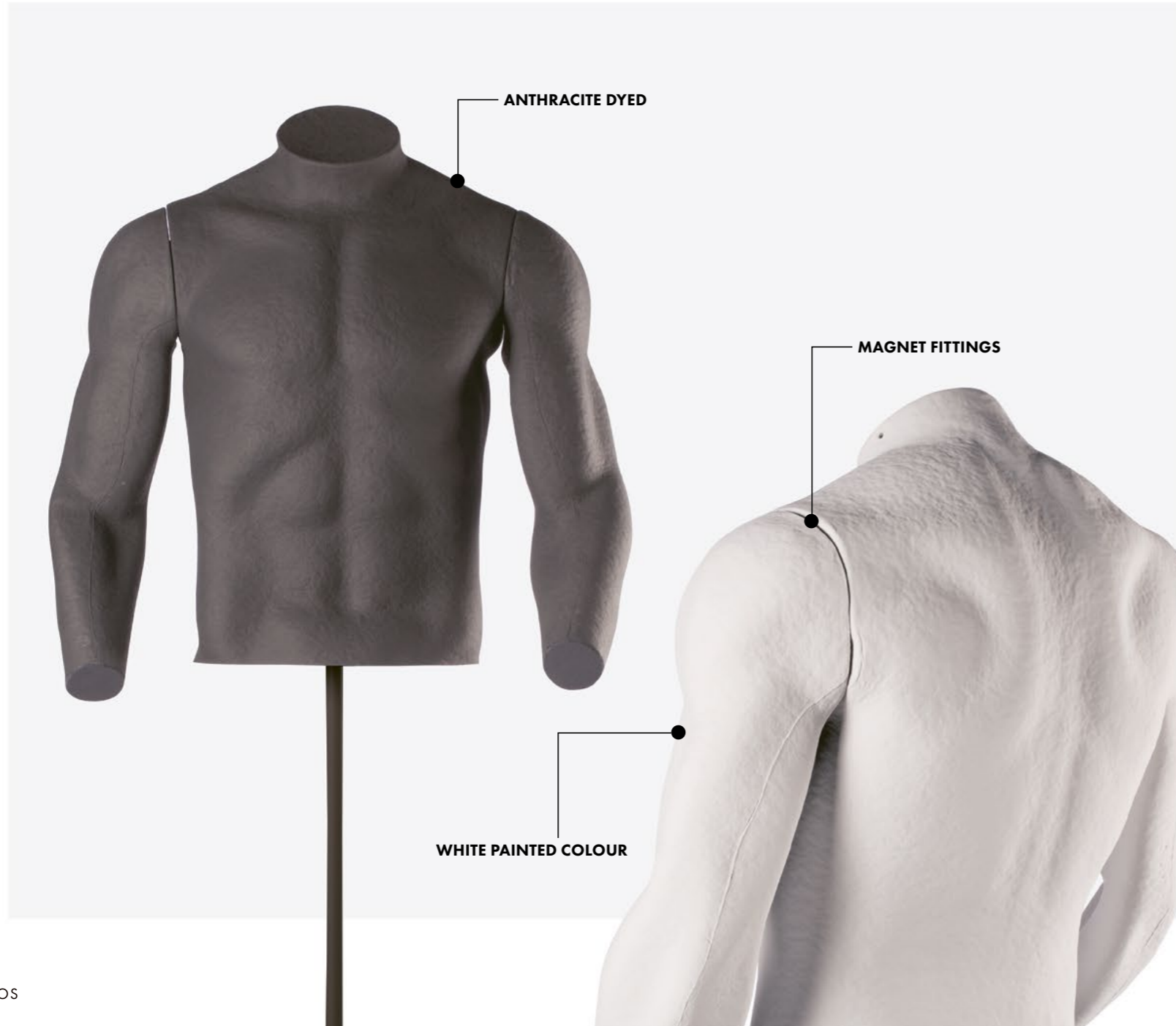
ATHOS

REF. 2717
OPTIONAL
FINISHES

SIZE 48/50
Baseplate · Hands · Hanging fittings · Hood support · Logotype
Natural · Painted · Dyed (p. 36)

ATHOS

PASQUAL ARNELLA



HEKLA

REF. 2740
OPTIONAL
FINISHES

SIZE 34

ARMLESS REF. 2747

Baseplate · Hands · Head · Armless · Hanging fittings · Hood support · Logotype
Natural · Painted · Dyed (p. 36)

NATURAL COLOUR

ANTHRACITE DYED

ARMLESS TORSO

PASQUAL ARNELLA

15

TORSOS



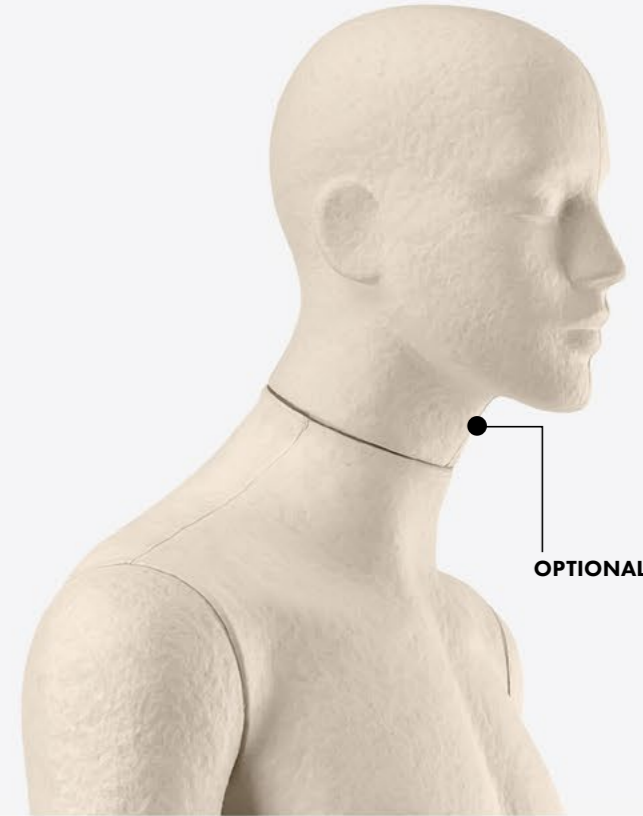
METAL BASEPLATE



MAGNET FITTINGS



ARMLESS TORSO



OPTIONAL HEAD



OPTIONAL HANDS

16

TORSOS



PYRINEES

MALE REF. 2666 SIZE 46 FEMALE REF. 2665 SIZE 34/36 MALE XL REF. 2711 SIZE 48/50
OPTIONAL Baseplate · Hanging fittings
FINISHES Natural · Painted · Dyed (p. 36)

PYRINEES



18

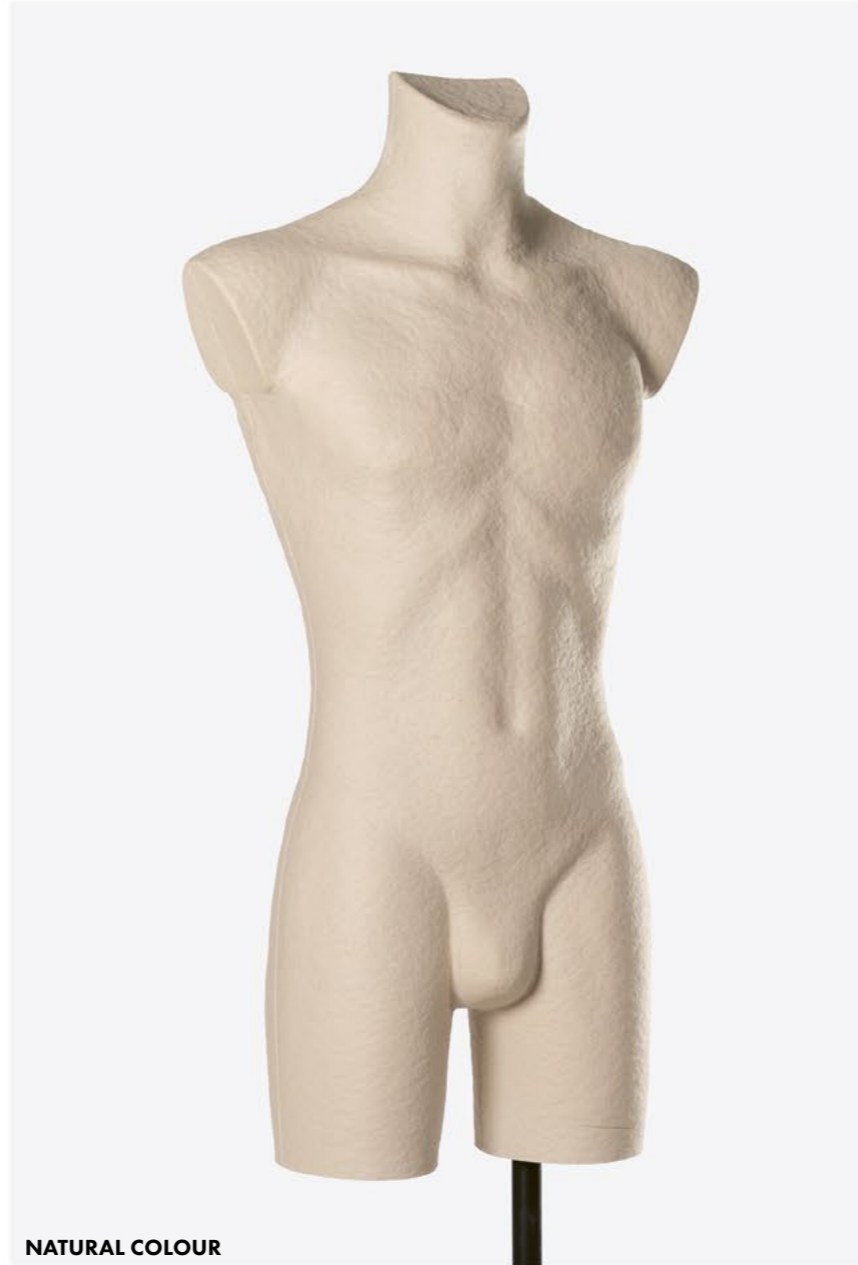
TORSOS

ARVON

REF. 50
OPTIONAL FINISHES
Baseplate · Hanging fittings · Logotype
Natural · Painted · Dyed (p. 36)



ANTHRACITE DYED



NATURAL COLOUR

VICTORIA

REF. 55
OPTIONAL FINISHES
Baseplate · Hanging fittings · Logotype
Natural · Painted · Dyed (p. 36)



LOGAN | SHASTA

LOGAN REF. 04 SIZE 46/48 SHASTA REF. 07 SIZE 38
OPTIONAL Baseplate · Head · Hanging fittings · Hood support · Wooden arms · Logotype
FINISHES Natural · Painted · Dyed (p. 36)



MALE BUST FORM



FEMALE BUST FORM



OPTIONAL HEAD



WITHOUT OPTIONAL HEAD

20

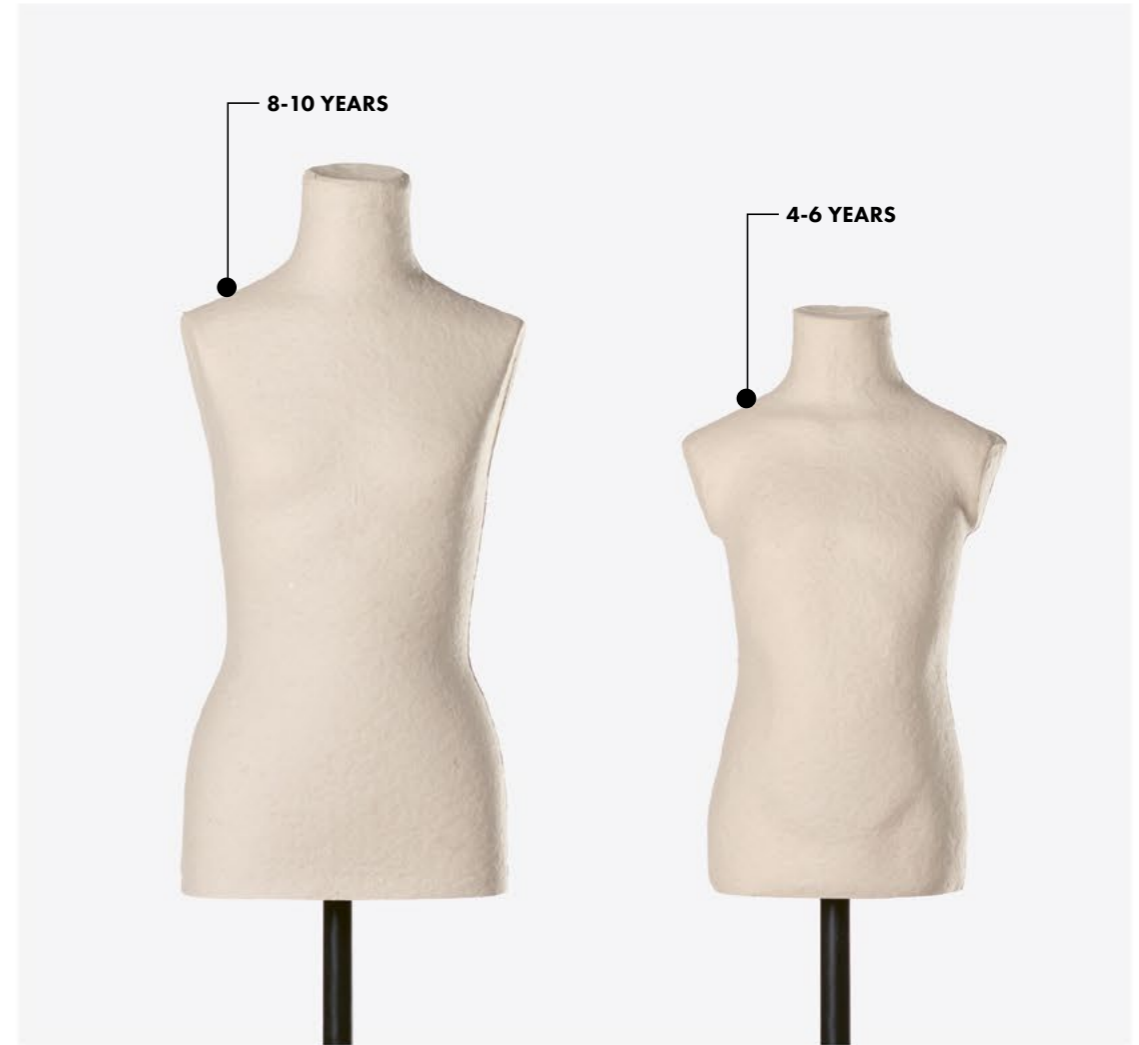
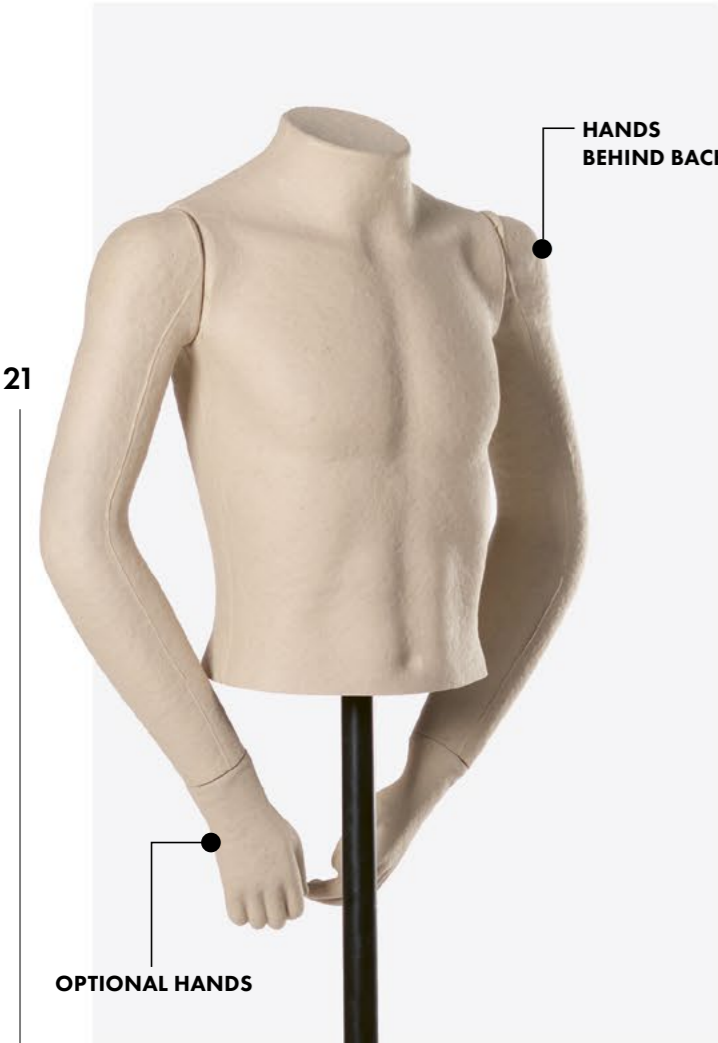
TORSOS

ARAN

REF. 2796A **SIZE** 8-10 years
OPTIONAL FINISHES Baseplate · Head · Hands · Straight/back arms · Hanging fittings · Hood support · Logotype
Natural · Painted · Dyed (p. 36)

KIDS

REF. 10 **SIZE** 8-10 years REF. 14 **SIZE** 4-6 years
OPTIONAL FINISHES Baseplate · Hanging fittings · Hood support · Logotype
Natural · Painted · Dyed (p. 36)



ANDES

MALE REF. 2767 SIZE 48/50 FEMALE REF. 2758 SIZE 34/36

OPTIONAL Hanging fittings · Logotype

FINISHES Natural · Painted · Dyed (p. 36)

legs



USE AS
'HIP DISPLAY'

CARABINERS

EYEBOLTS



DOLOMITES

MALE REF. 2757 SIZE 48/50 FEMALE REF. 2760 SIZE 38

OPTIONAL Baseplate · Hanging fittings · Logotype

FINISHES Natural · Painted · Dyed (p. 36)

MALE



WOODEN BASEPLATE

CUSTOM COLOUR

FEMALE



WHITE PAINTED

GENTO | VALIRA

GENTO REF. 2765B SIZE 48/50 VALIRA REF. 2766B SIZE 36/38
OPTIONAL Baseplate · Hanging fittings · Waist supplement · Logotype
FINISHES Natural · Painted · Dyed (p. 36)

GENTO

VALIRA



WOODEN BASEPLATE



GENTO & VALIRA

hips & foot forms



CLASSIC HIPS

MALE REF. 60 SIZE 46/48 FEMALE REF. 65 SIZE 36
OPTIONAL Baseplate · Hanging fittings · Logotype
FINISHES Natural · Painted · Dyed (p. 36)



ANDES HIPS

MALE REF. 2767H SIZE 48/50 FEMALE REF. 2758H SIZE 34/36
OPTIONAL Baseplate · Hanging fittings · Logotype
FINISHES Natural · Painted · Dyed (p. 36)

MALE



FEMALE



FOOT FORMS

MALE -(LEFT) REF. 92, (RIGHT) REF. 2778 FEMALE (RIGHT) REF. 2734
OPTIONAL 3 heights available · Customized height · Logotype
FINISHES Natural · Painted · Dyed (p. 36)
· All the items include a magnet system with a metal disc as a baseplate.

LONG VERSION

SHORT VERSION

MALE FOOT (LEFT)

FEMALE FOOT (RIGHT)

MALE FOOT (LEFT)

MALE FOOT (LEFT/RIGHT) EXTRA-SHORT SIZE



FOOT FORMS

FOOT FORMS

KID FOOT REF. 90
OPTIONAL Customized height · Logotype
FINISHES Natural · Painted · Dyed (p. 36)
· All the items include a magnet system with a metal disc as a baseplate.



KID FOOT

FOOT FORMS

FLAT FEET FOR SANDALS REF. 2808
OPTIONAL Logotype
FINISHES Natural · Painted · Dyed (p. 36)
· Product sold in pairs



FLAT FEET FOR SANDALS

SEPARATED BIG TOE

FOOT FORMS



heads

HEADS

OPTIONAL Logotype
FINISHES Natural · Painted · Dyed (p. 36)



Faceless | REF. 2694

Circumference of head : 59cm



Female | REF. 76

C : 56cm



Gento | REF. 2765C

C : 59cm



Valira | REF. 2766C

C : 58cm



Male | REF. 75

C : 59cm



Gento faceless | REF. 2790

C : 62cm



Valira faceless | REF. 2791

C : 59cm

HEADS

OPTIONAL FINISHES Logotype
Natural · Painted · Dyed (p. 36)



31 **Logan** | REF. 2730 C: 56cm

Shasta | REF. 2731 C: 53cm

Unisex | REF. 70 C: 50cm

Unisex with shoulder | REF. 77 C: 51cm



Aran | REF. 2796C C: 50cm

Teide | REF. 2753 C: 56cm

HEADS



SHASTA

LOGAN

HEADS

OPTIONAL
FINISHES

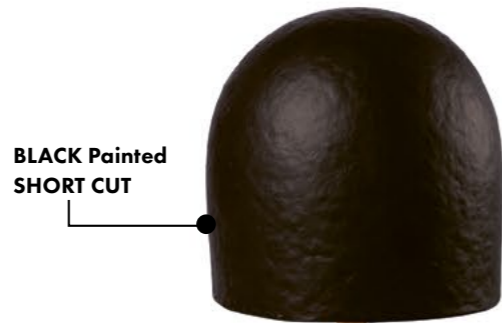
Logotype · Wooden baseplate (Half sphere only)
Natural · Painted · Dyed (p. 36)



Long neck | REF. 2738

Long neck with ears | REF. 2739

Circumference of head : 56cm



**BLACK Painted
SHORT CUT**



**NATURAL COLOUR
LONG CUT**

Half sphere | REF. 2737

Circumference of head : 50cm





METAL BASEPLATE

Egg head | REF. 2789A,B

Circumference of head : 52cm(2789A), 57cm (2789B)

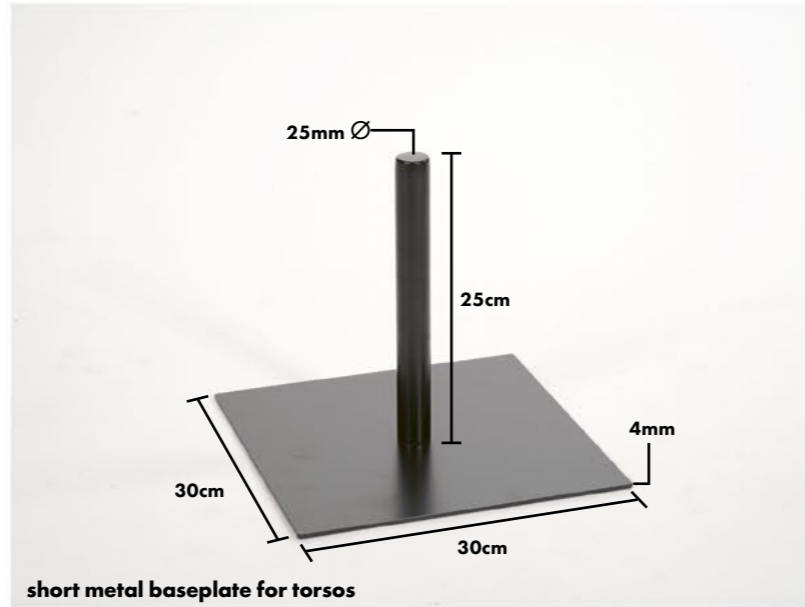


Optionals & Fittings

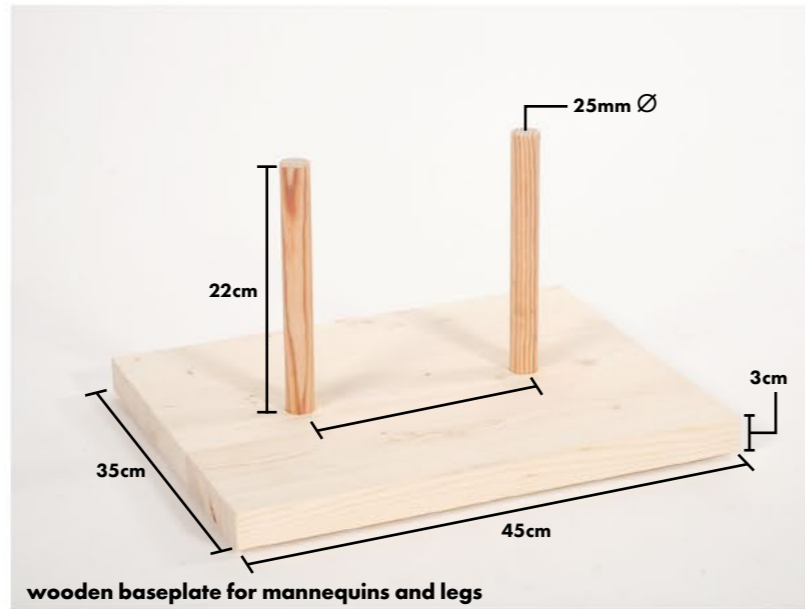
Baseplates



metal baseplate for torsos



short metal baseplate for torsos



wooden baseplate for mannequins and legs

Hanging fitting



eyelets



eyebolt



nape hook

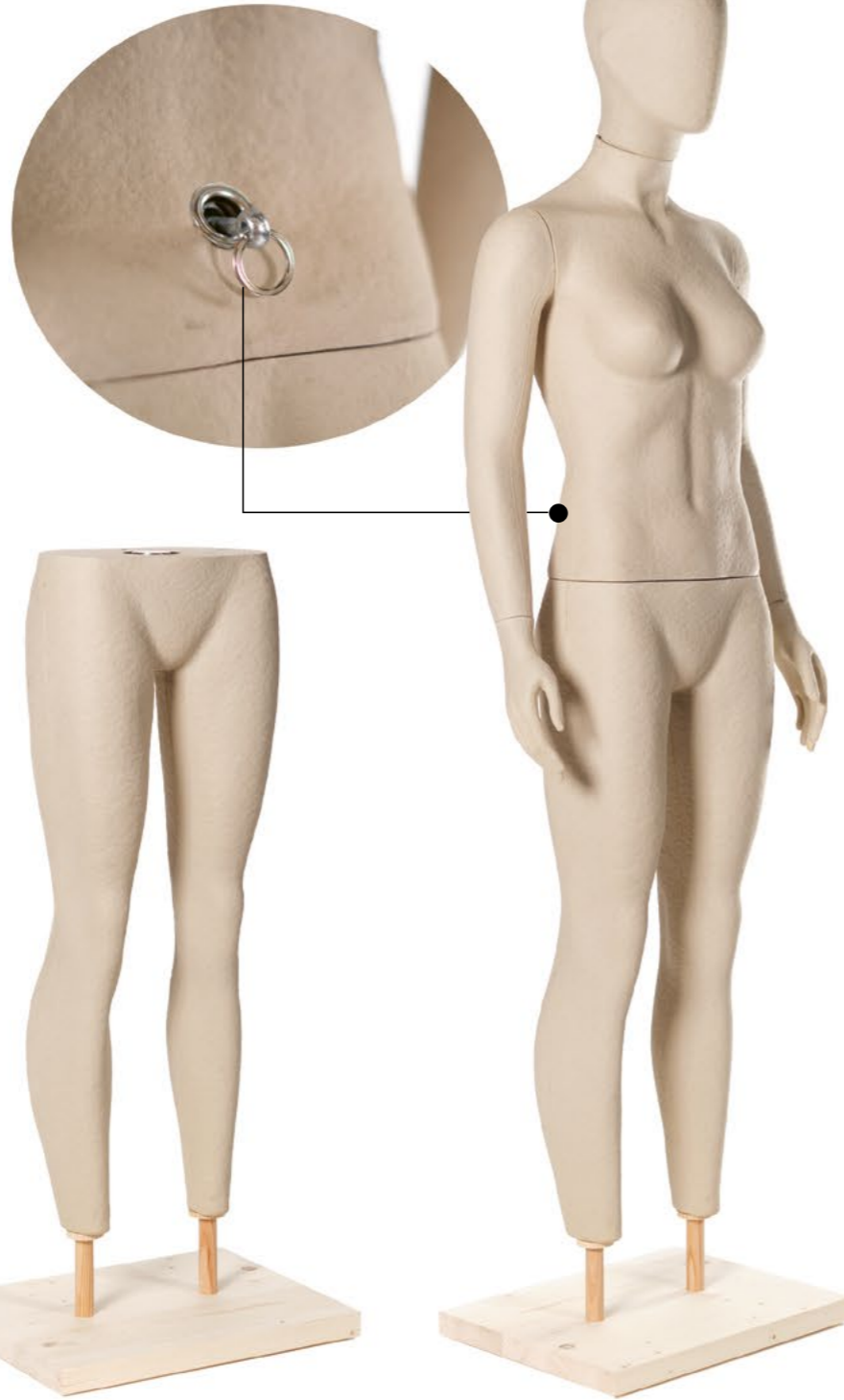


carabiners

3 in 1 system

1 Mannequin = 1 torso + 1 legs display

We designed a special back screw so you can fix the upper part of the mannequin over any 25 mm Ø pipe, as well as the legs, that thanks to our flat joint, you can use them as an independent display.



35

OPTIONALS & FITTINGS

Hood support



Support system for hoods and headwear, easily removable through tool-free screws and magnets. Create a ghost effect with any of our mannequins.



Choose your **COLOUR!**



Logotype



Customized projects

IN-HOUSE PRODUCTION

Pasqual Arnella has its own collection of bust forms and torsos, but we are specialized in developing customized designs. Our purpose is to provide the perfect solution for a better in-store communication.

We take care of sculpting, moulding and manufacturing, ensuring an accurate follow-up of every project to get the perfect interaction with your brand.



- The appearance (colours, size, shape, surface) of any of our products may vary slightly due to the nature of the material, both from one product to another or from any physical or digital content from Pasqual Arnella.
- The product references and prices that are shown in this catalog and derivatives are for purposes of guidance and do not bind Pasqual Arnella until the express confirmation of an order.
- The prices shown in this catalogue don't include transport costs or any taxes. We will calculate them individually in each case/offer.

#WeAre**PAPERPASTE**



Pasqual Arnella S.L.

—
C/ Capcir, 22, 08211, Castellar del Vallès
BARCELONA - SPAIN
Tel. +34 93 747 10 90 Mob. +34 625 058 889
info@pasqualarnella.com - www.pasqualarnella.com



Penther Haus

(DACH & Scandinavia)

—
Karl-Ferdinand-Braun Straße 18, 21423, Winsen/Luhe
DEUTSCHLAND - GERMANY
Tel. +49 4171 66962-0
john@pasqualarnella.com